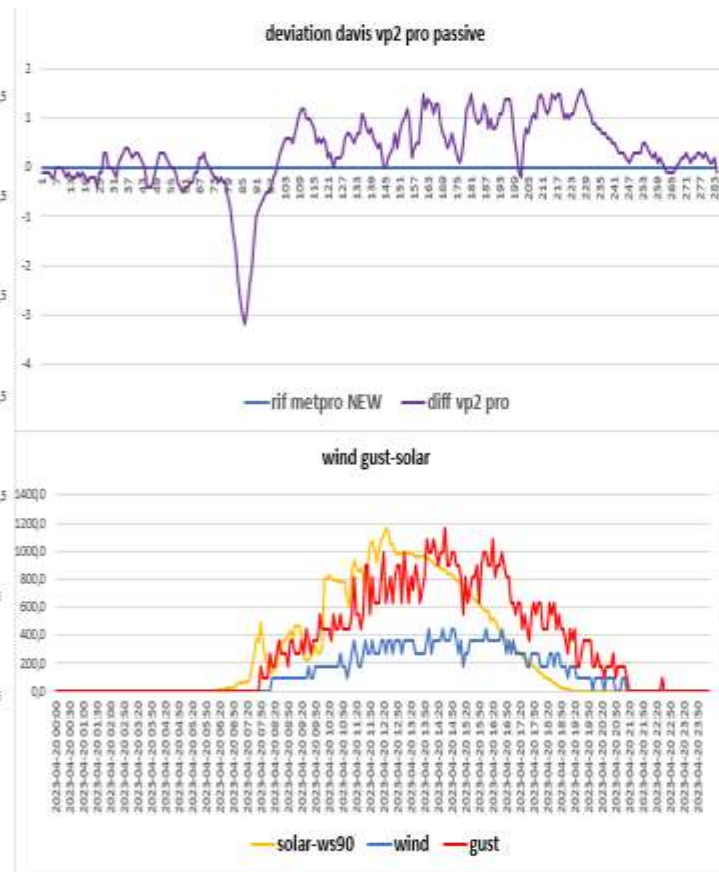
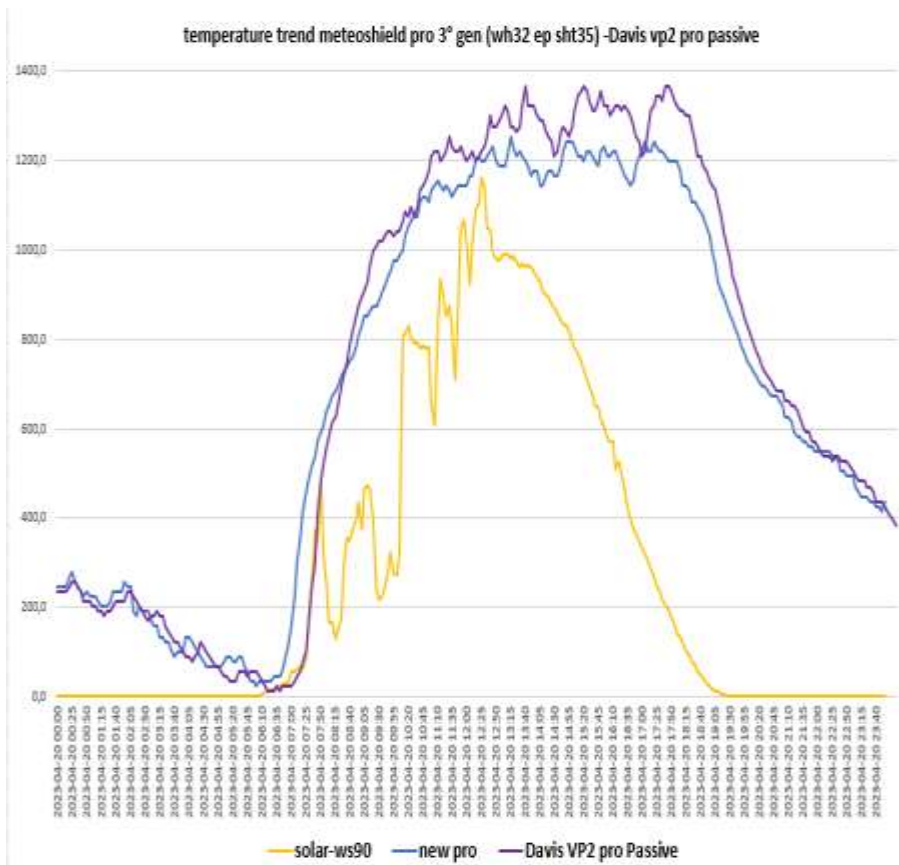
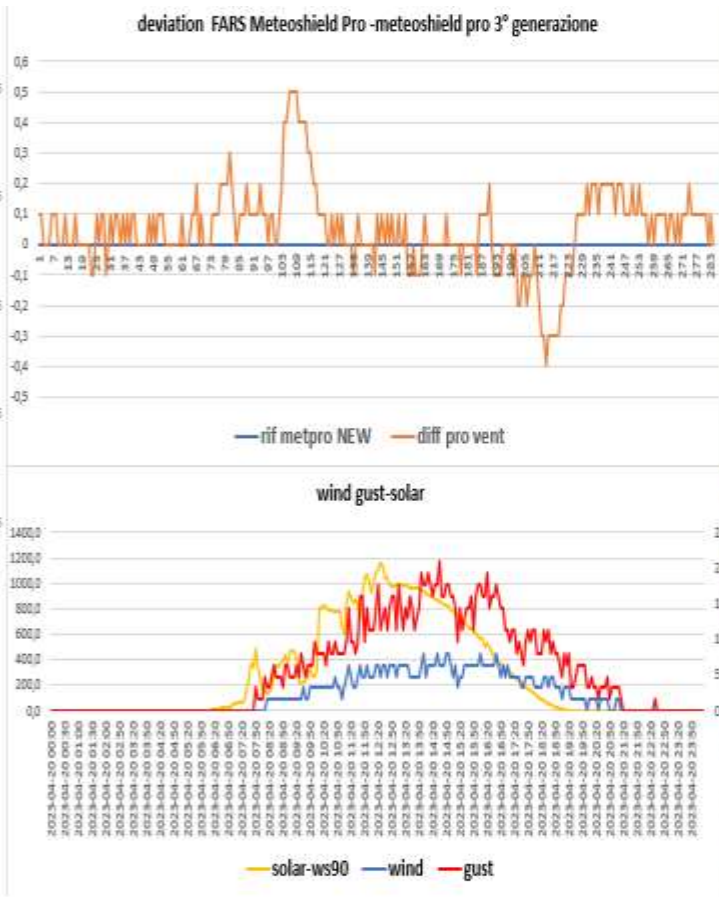
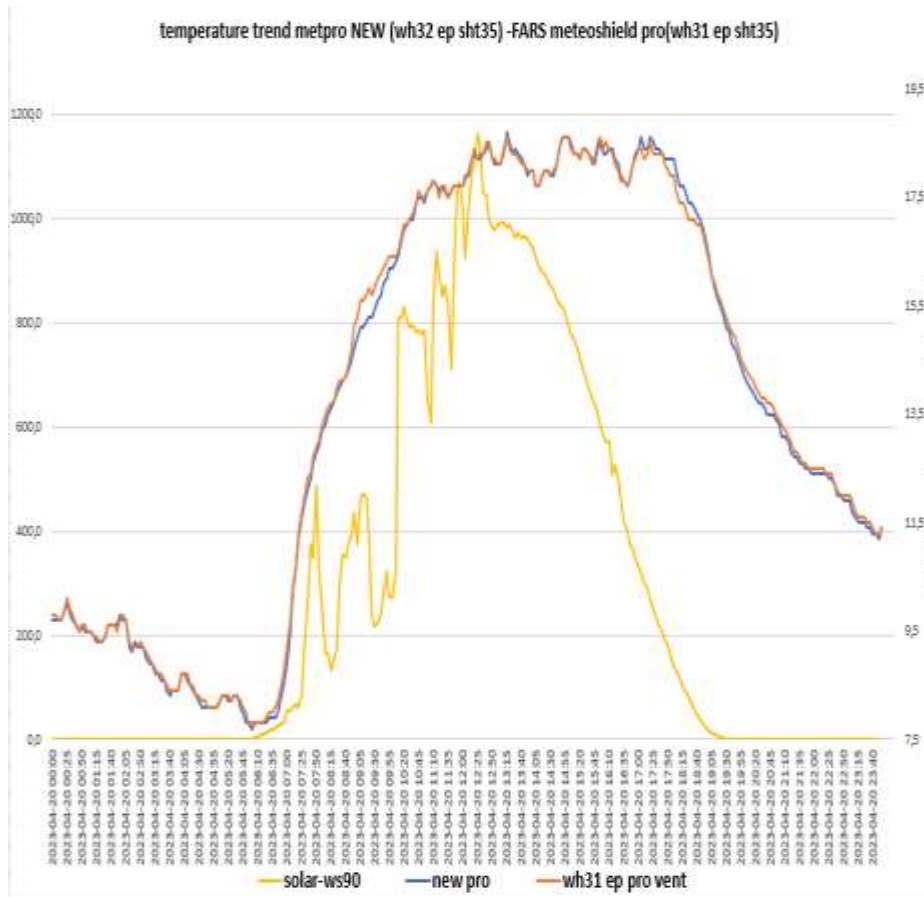


SCREEN TREND OF 20-04-2023

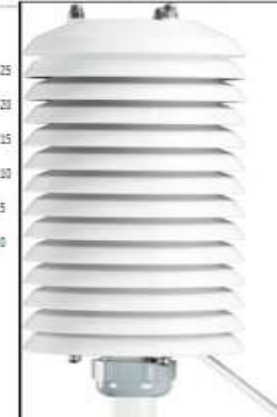
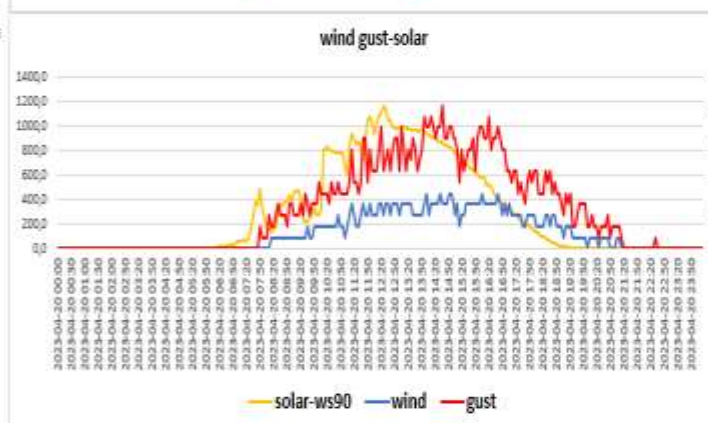
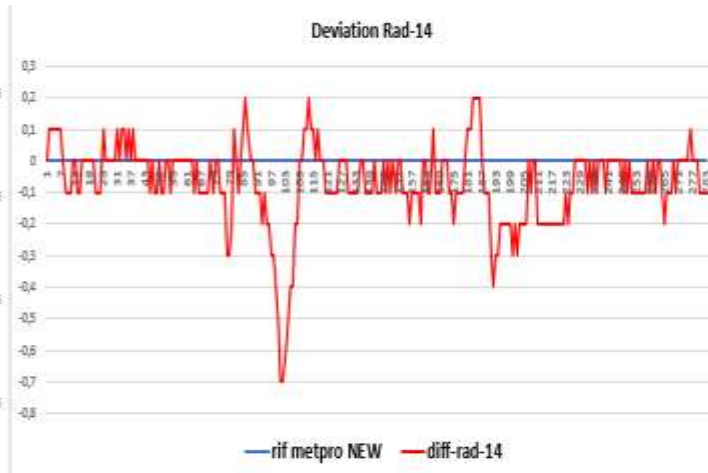
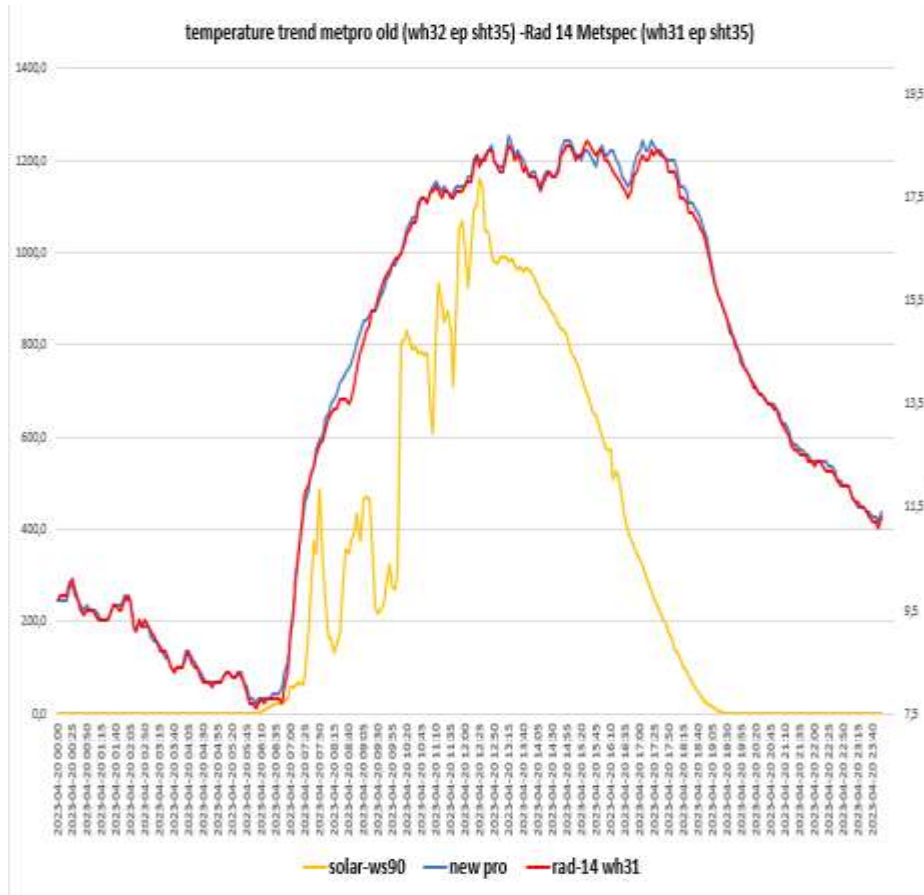
Davis vp2 pro- Metpro old (Probe sensor wh32EP ecowitt)



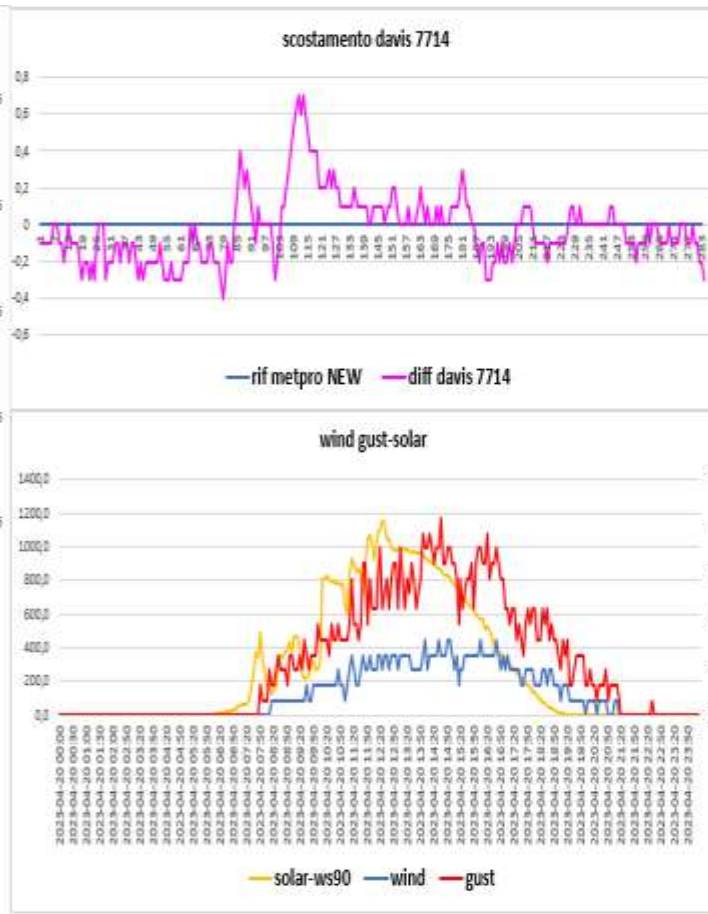
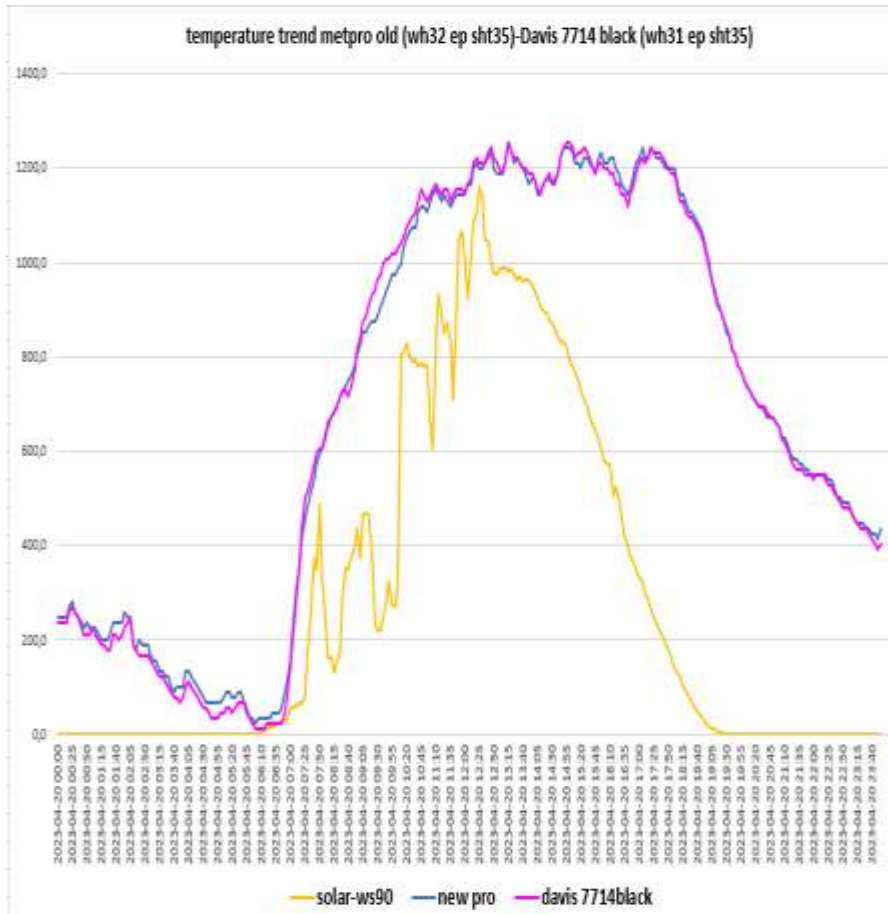
Metpro NEW (Probe sensor wh32EP ecowitt)- FARS meteoshield pro 3° gen (Probe sensor wh31EP ecowitt)



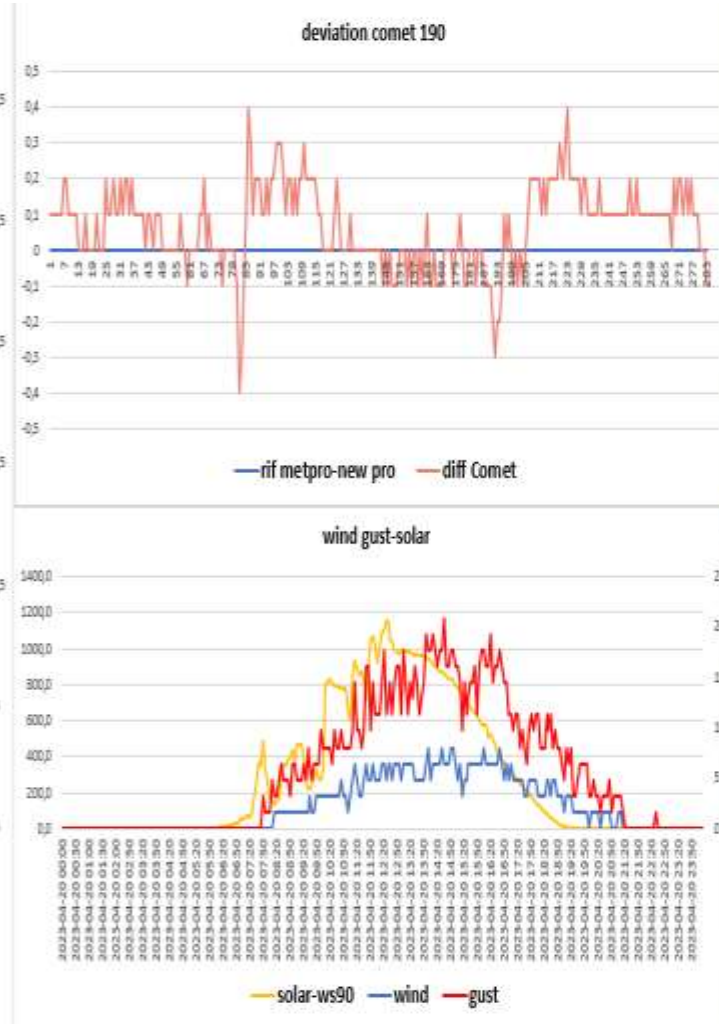
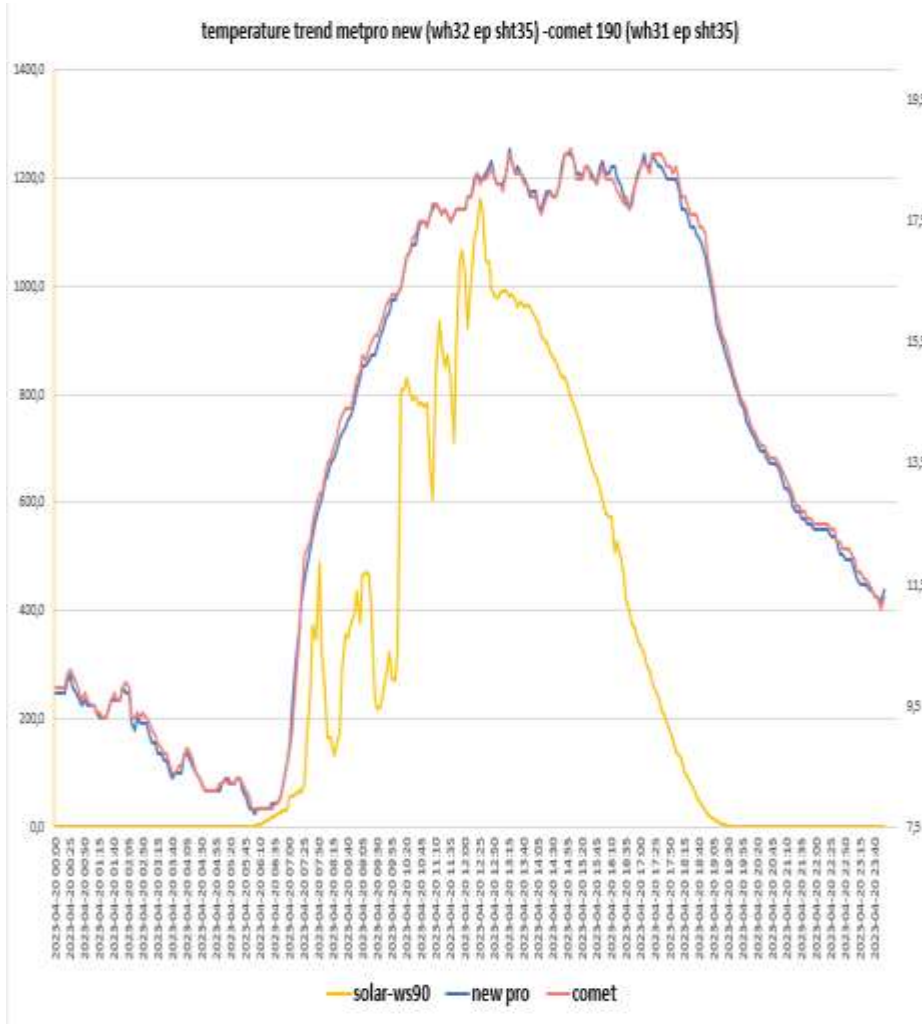
Metpro NEW (Probe sensor WH32 EP ecowitt) – Rad14 Metspec (Probe sensor wh31EP-WH31ep ecowitt)



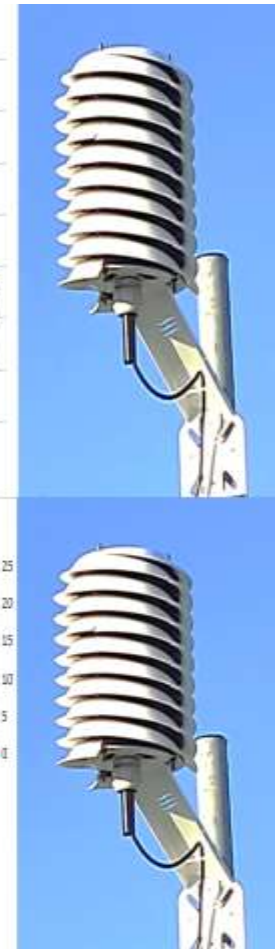
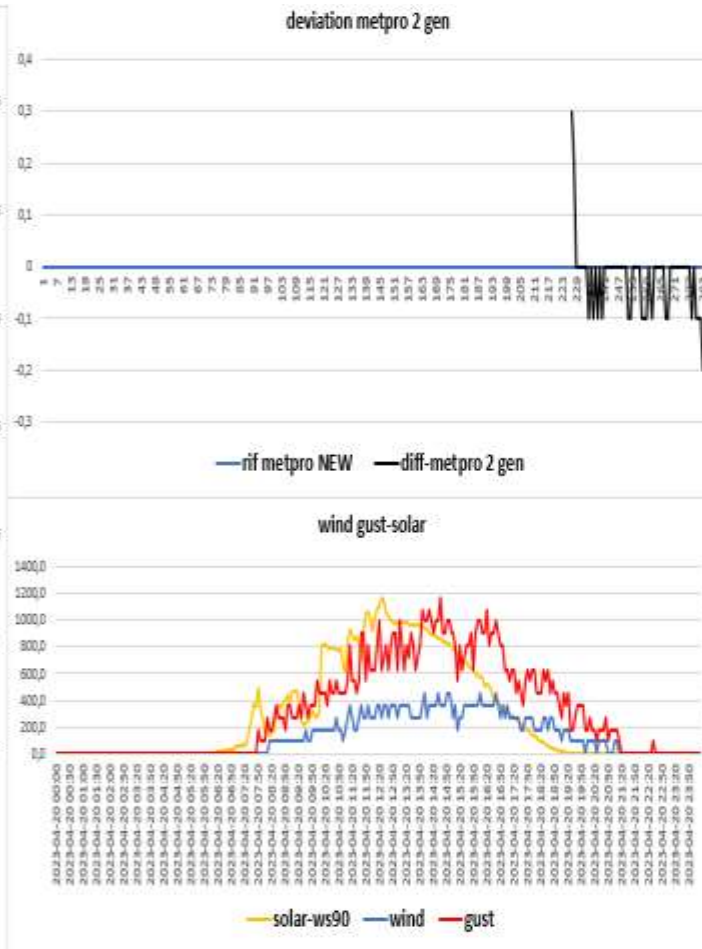
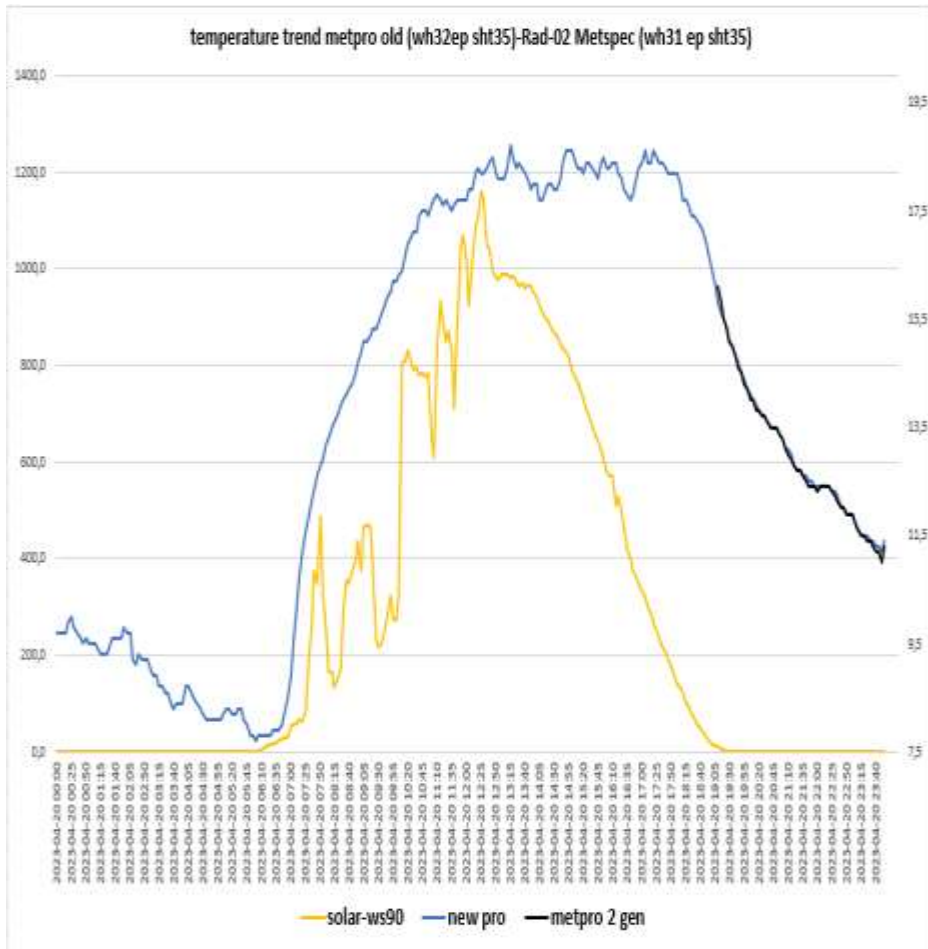
Metpro NEW (Probe sensor wh32 EP ecowitt)-DAVIS 7714 Black(Probe sensor wh31EP ecowitt)-



NEW PRO BARANI (probe sensor wh31 EP ecowitt)- COMET 190 probe sensor wh32 EP



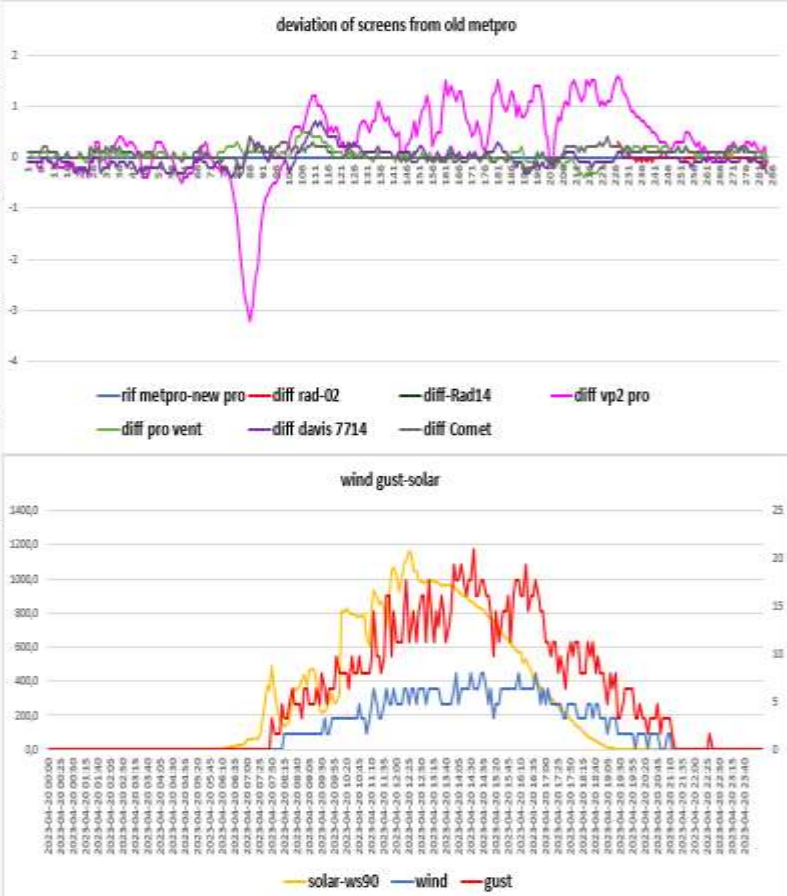
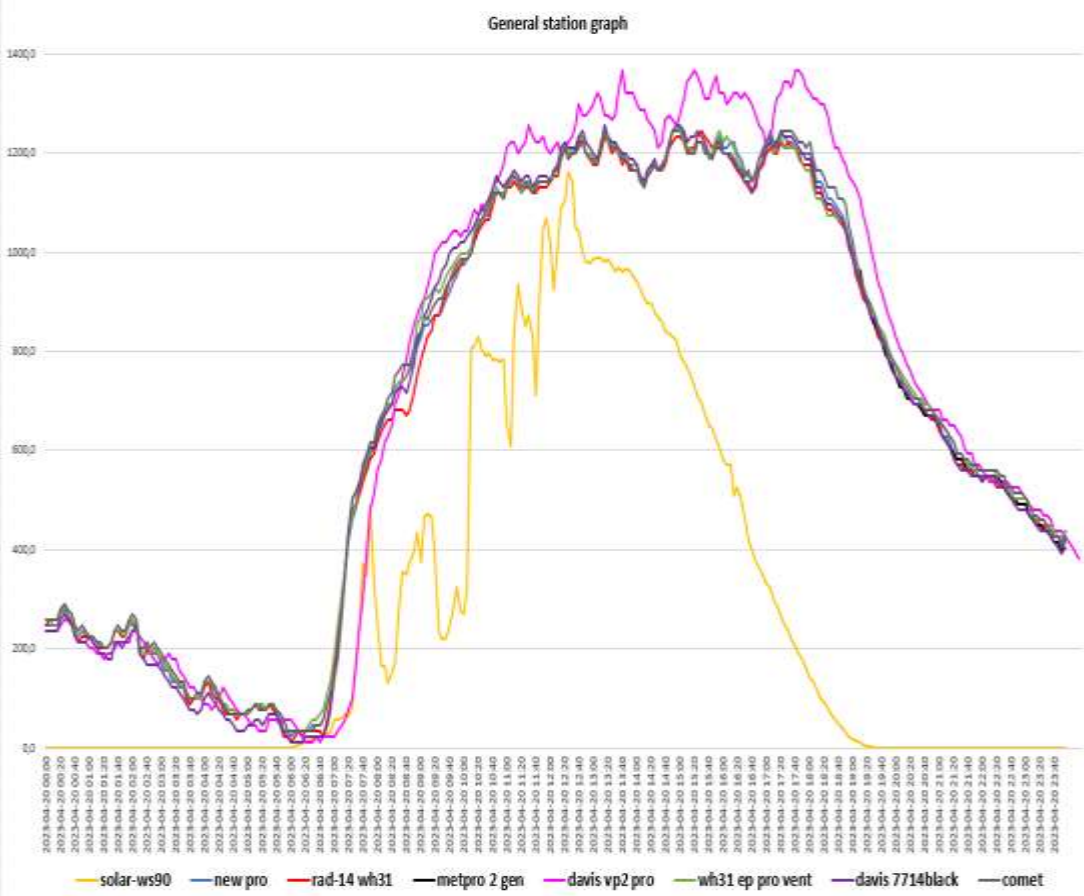
METPRO OLD (probe sensor wh32EP ecowitt) -RAD-02 (probe sensor wh31 EP ecowitt)



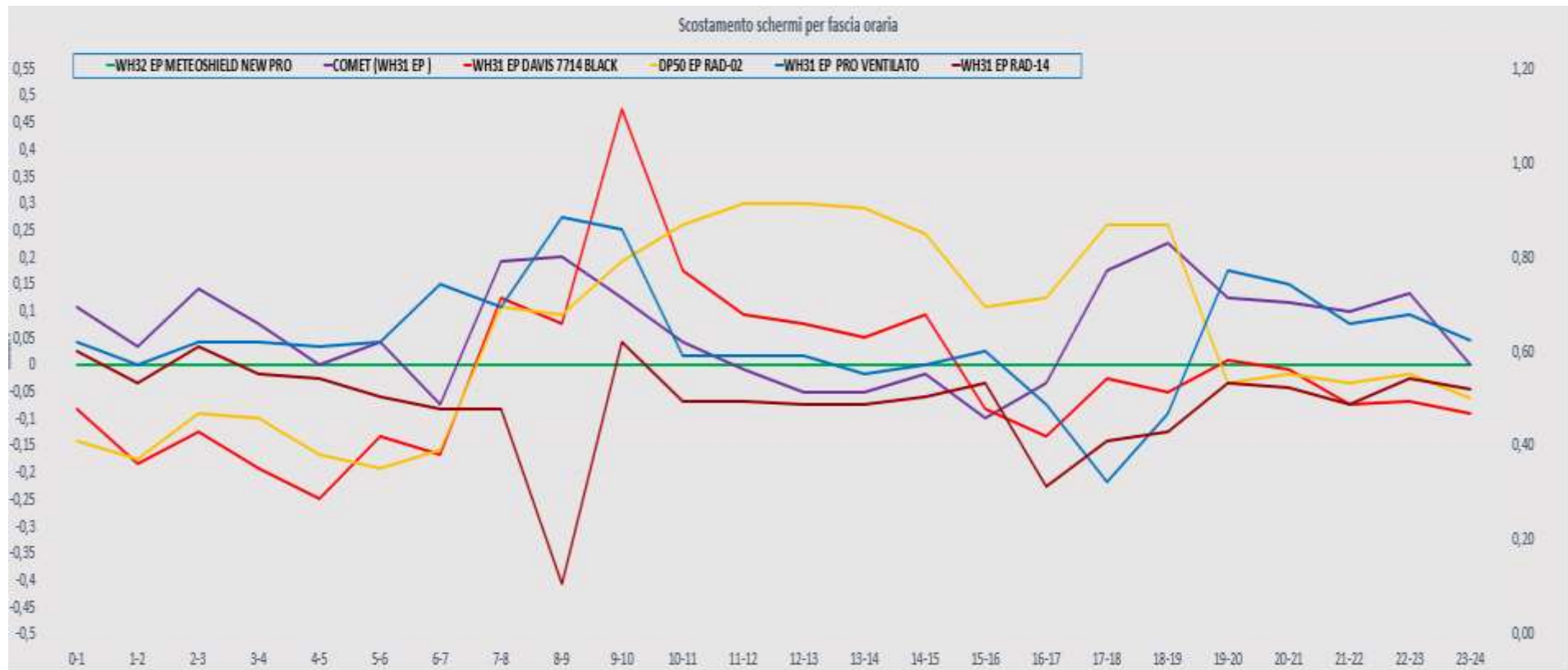
STATISTICAL DATA (MAXIM UM MINIMUM AVERAGES)

vento medio 24H	2,2 km/h	vento medio dalle ore 08:00 alle 18:00	4,7 km/h	dalle ore 08:00 alle 18:00	scostamenti dalle ore 08:00 alle 18:00						
media met pro New	13,775			media met pro 3° gen	17,5						
max met pro New	18,7	schermo di riferimento		max met pro 3° gen	18,7						
min met pro New	7,7			min met pro 3° gen	13,7						
media davis vp2 pro	14,051	scost medio davis vp2 pro	0,32	media davis vp2 pro	18,2	scost medio davis vp2 pro	0,7	media davis7714black	17,6	scost medio davis 7714 black	0,1
max davis vp2pro	19,7	scost max davis vp2 pro	1,6	max davis vp2 pro	19,7	scost max davis vp2 pro	1,5	max davis7714 black	18,7	scost max davis 7714 black	0,7
min davis vp2 pro	7,6	scost min davis vp2 pro	-3,2	min davis vp2 pro	13,3	scost min davis vp2 pro	-0,4	min davis 7714 black	13,7	scost min davis 7714 black	-0,3
media rad-14	13,704	scost medio rad-14	-0,07	media Rad-14	17,4	scost medio rad-14	-0,1	media comet	17,5	scost medio comet	0,0
max rad-14	18,6	scost max rad-14	0,2	max rad-14	18,6	scost max rad-14	0,2	max comet	18,7	scost max comet	0,3
min rad-14	7,6	scost min rad-14	-0,7	min Rad-14	13,4	scost min rad-14	-0,7	min comet	13,9	scost min comet	-0,3
media rad-02	13,775	scost medio Rad-02	-0,02	media Rad-02	#DIV/0!	scost medio rad-02	#####	media pro ventilato	17,5	scost medio pro vent	0,0
max rad-02	18,7	scost max Rad-02	0,3	max Rad-02	0,0	scost max rad-02	0,0	max pro ventilato	18,6	scost max pro vent	0,5
min rad-02	7,7	scost min Rad-02	-0,2	min Rad-14	0,0	scost min rad-02	0,0	min pro ventilato	13,7	scost min pro vent	-0,4
media pro ventilato	13,826	scost medio pro vent	0,05								
max pro ventilato	18,6	scost max pro vent	0,5								
min pro ventilato	7,8	scost min pro vent	-0,4								
media davis 7714	13,754	scost medio davis 7714	-0,02								
max davis 7714	18,7	scost max davis 7714	0,7								
min davis 7714	7,6	scost min davis 7714	-0,4								

general summary



screen shift by time slot



RAIN 24h

Pluviometro ,manuale TFA	0.0 mm
Pluviometro vp2 pro	0,0 mm
Pluviometro wh40 ecowitt suolo	0,0mm
Meteorain Barani	0,0 mm
Pluviometro gw1001 ecowitt	0,0 mm

leaf wetness-leaf wetness-Pressure

