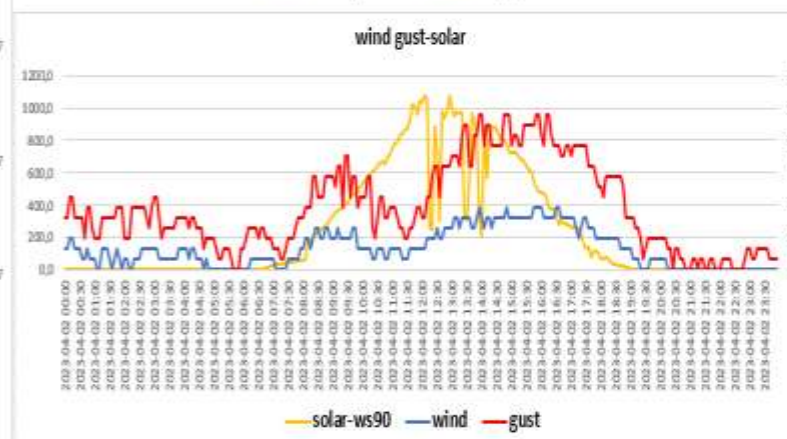
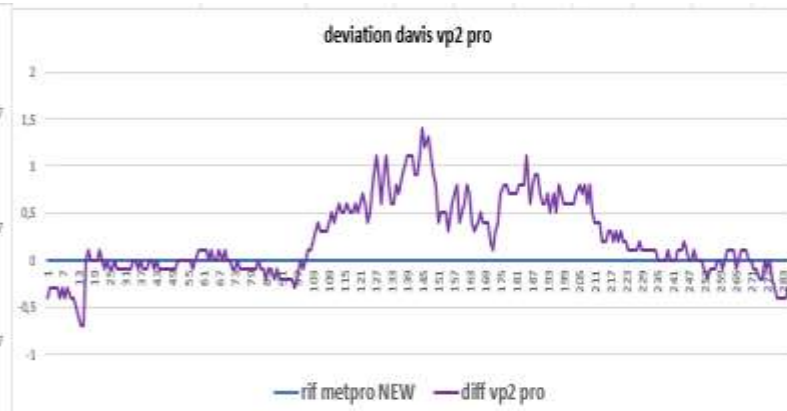
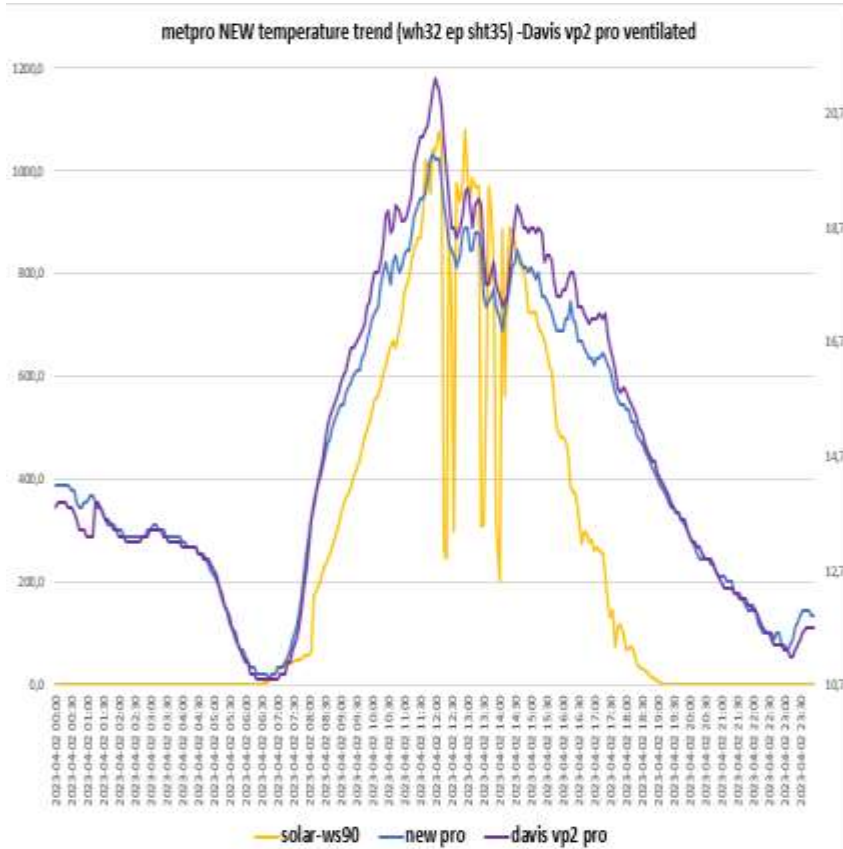
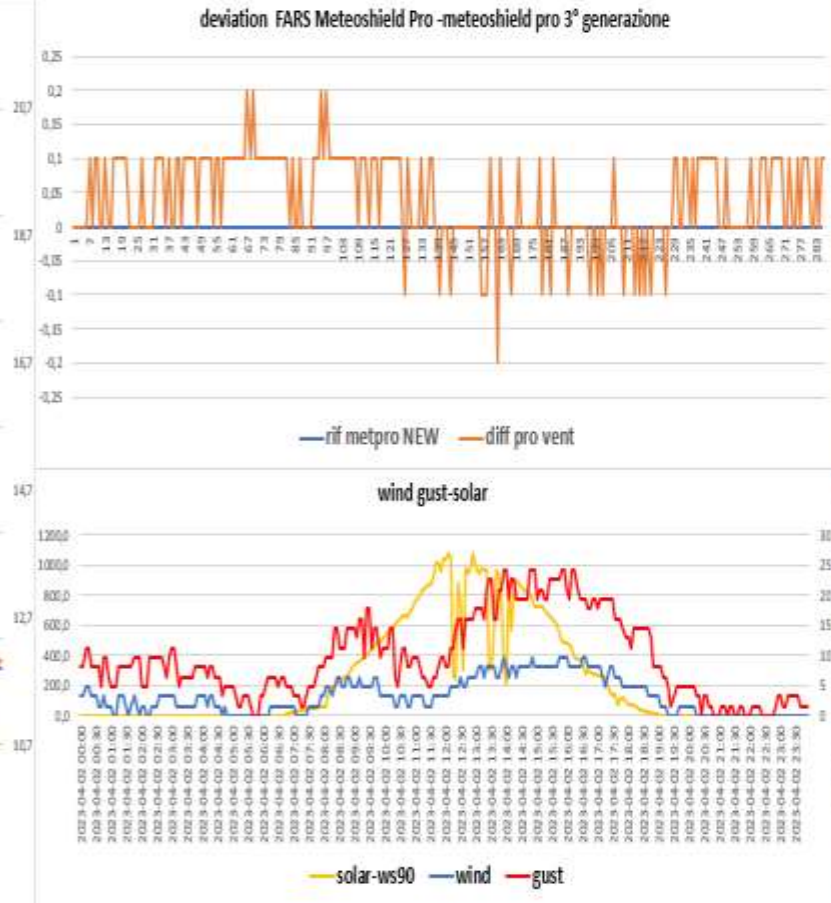
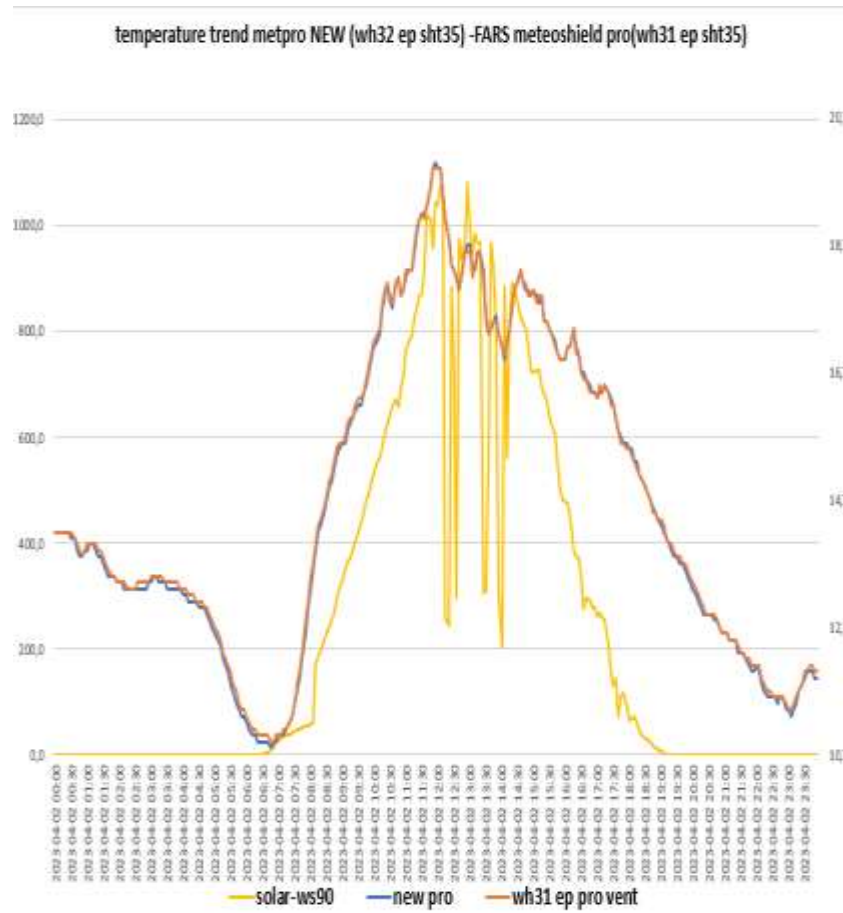


# SCREEN TREND OF 02-04-2023

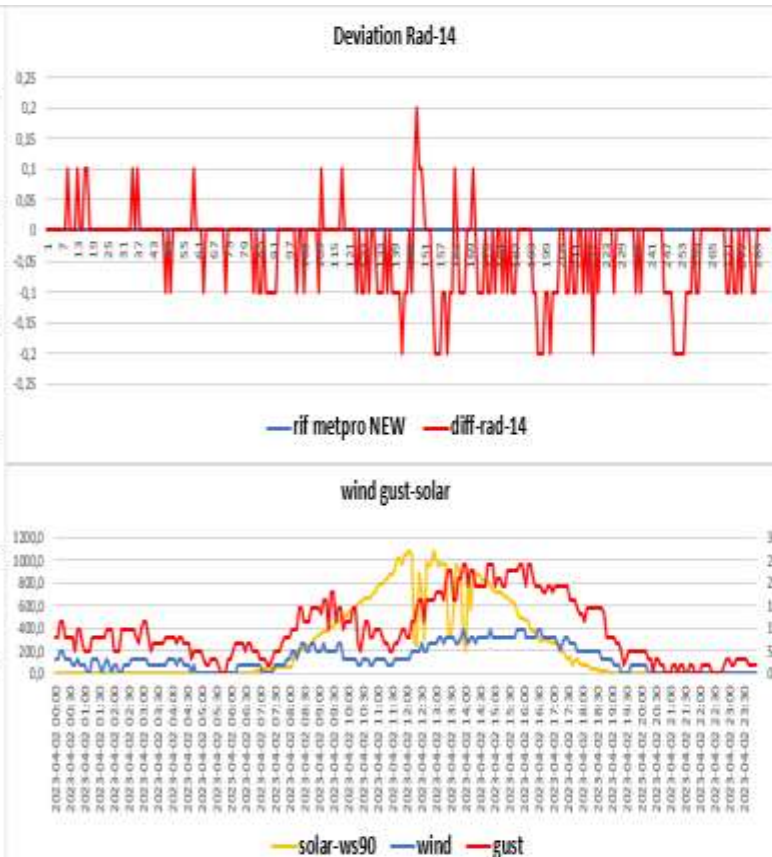
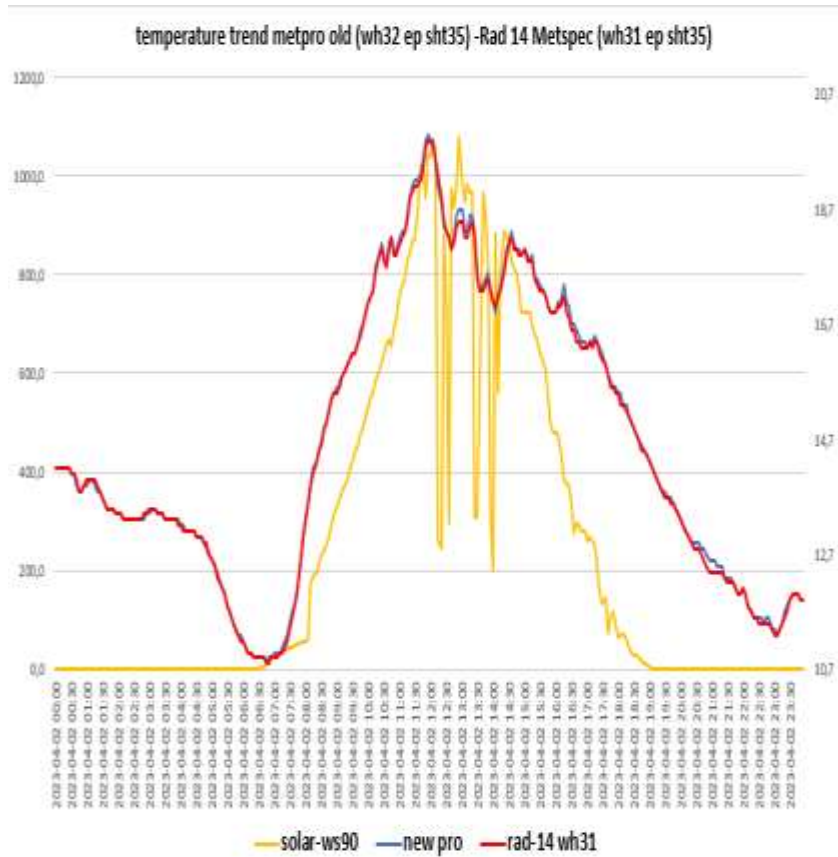
Davis vp2 pro- Metpro old (Probe sensor wh32EP ecowitt)



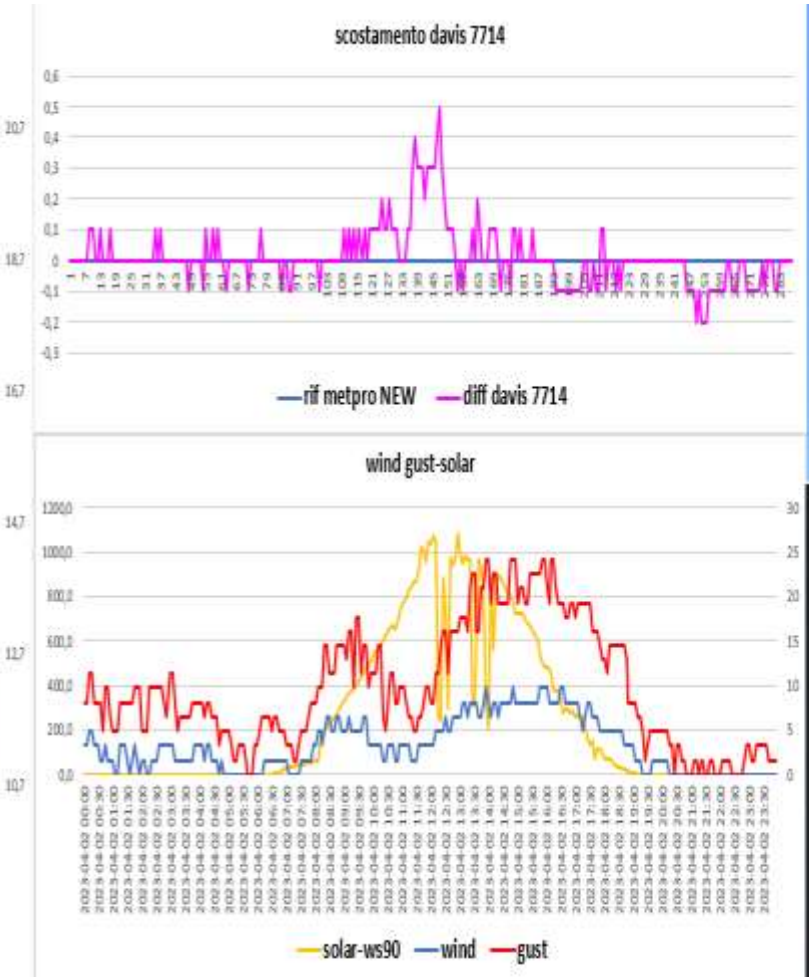
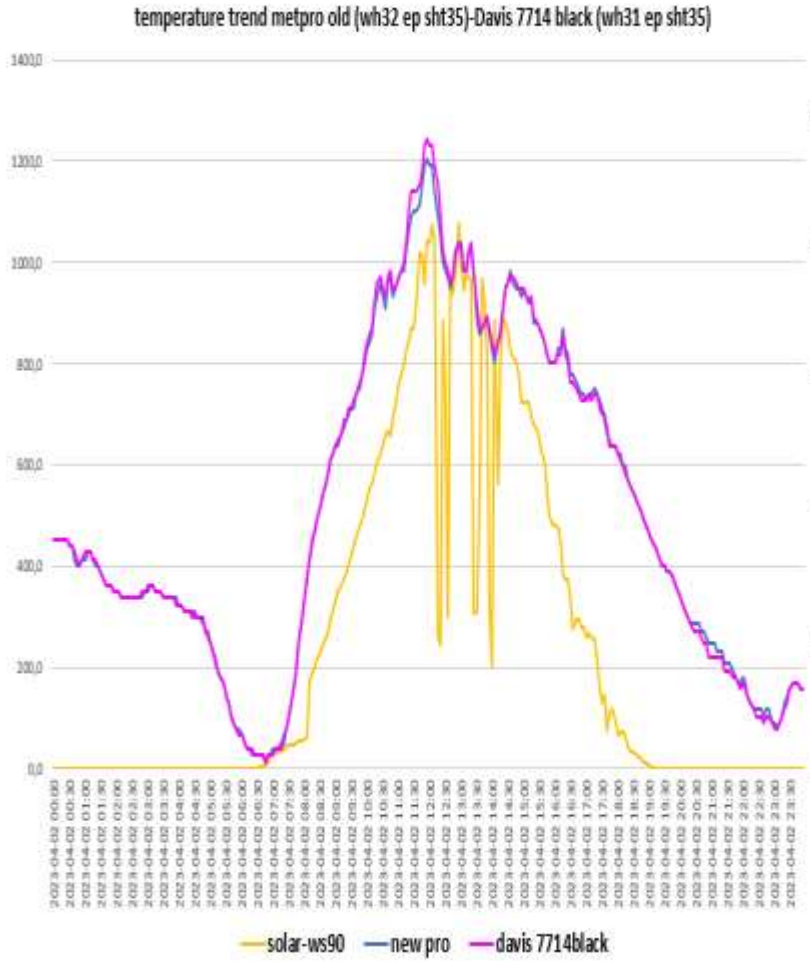
Meteoshield pro 3° gen (Probe sensor wh32EP ecowitt)- FARS meteoshield pro 3° gen(Probe sensor wh31EP ecowitt)



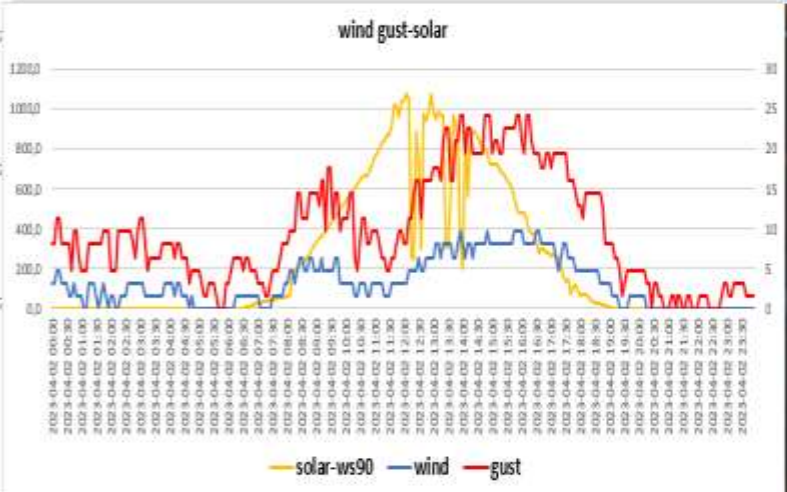
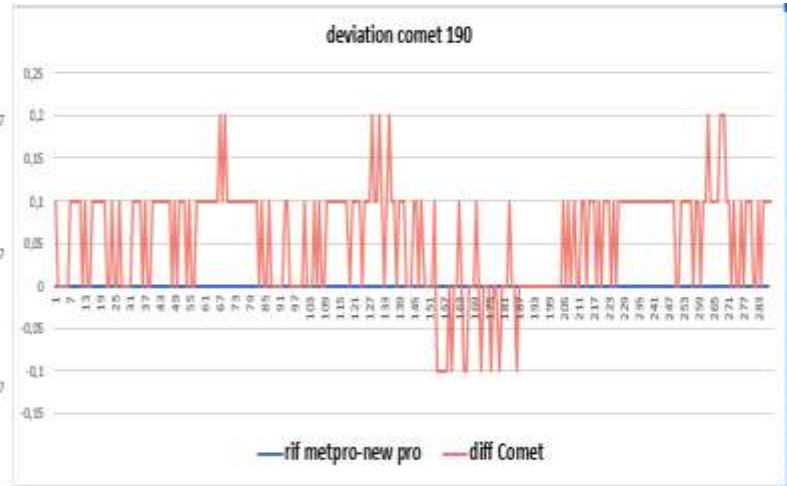
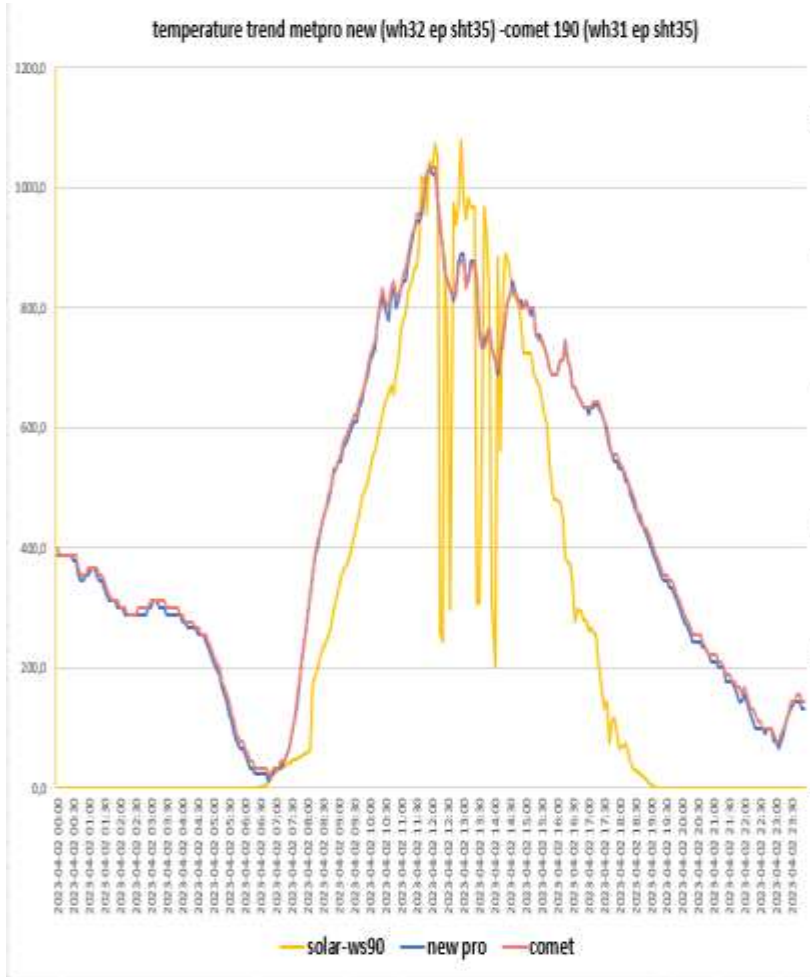
Meteoshield pro 3° gen (Probe sensor WH32 EP ecowitt) – Rad14 Metspec (Probe sensor wh31EP-WH31ep ecowitt)



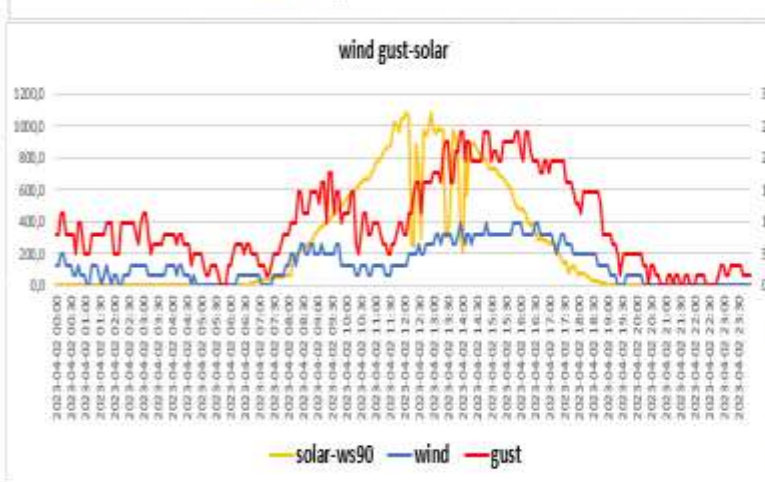
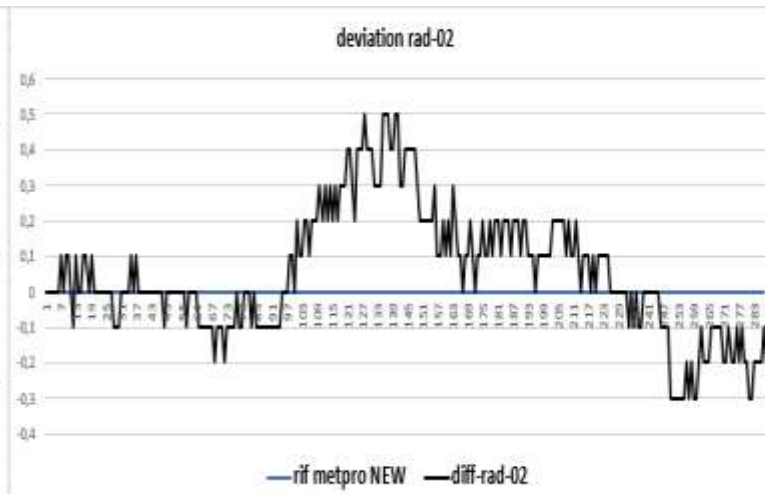
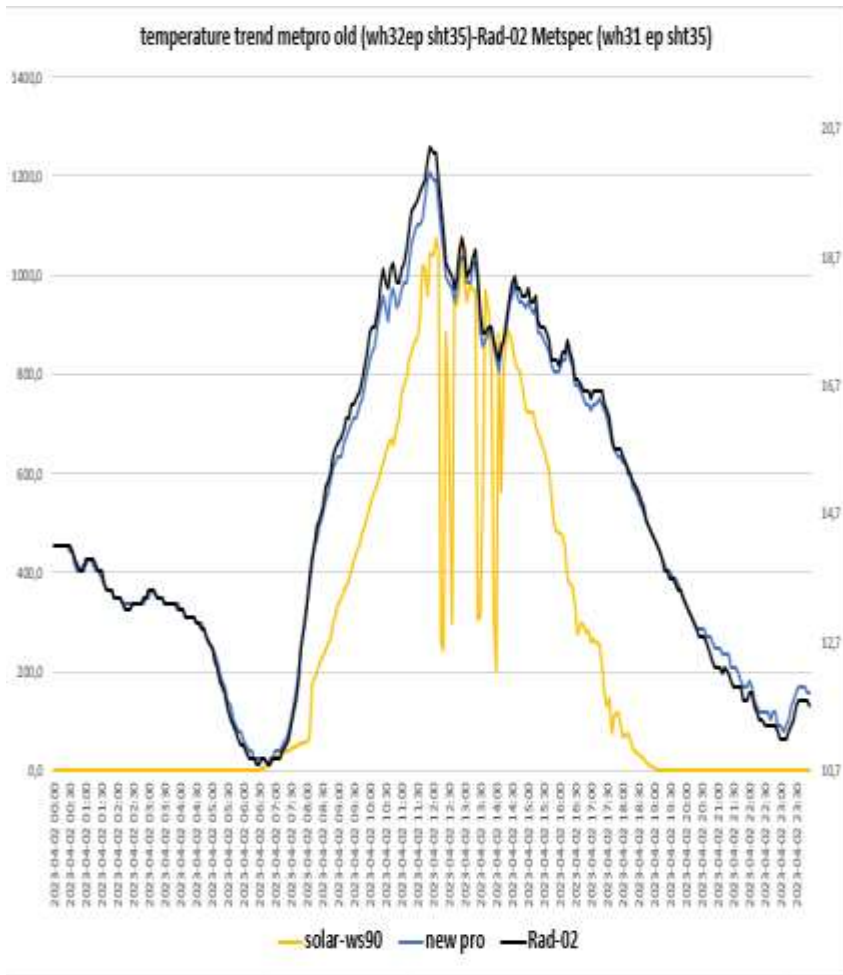
Meteoshield pro 3° gen (Probe sensor wh32 EP ecowitt)-DAVIS 7714 Black(Probe sensor wh31EP ecowitt)-



Meteoshield pro 3° gen (probe sensor wh32 EP ecowitt)- COMET 190 probe sensor wh32 EP

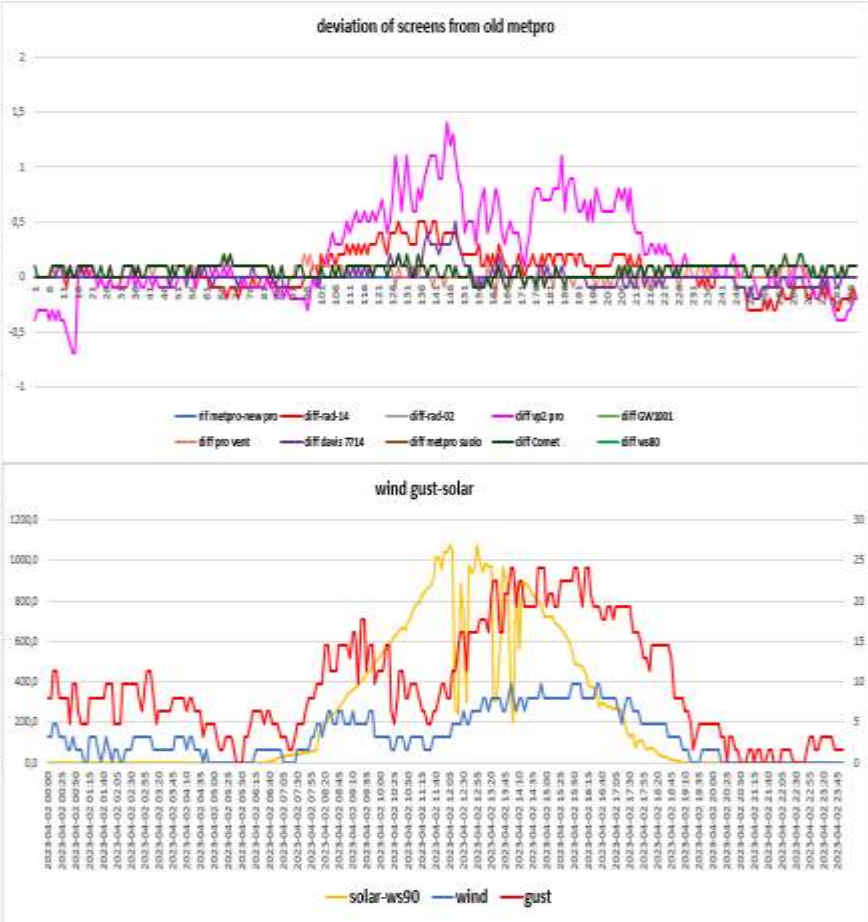
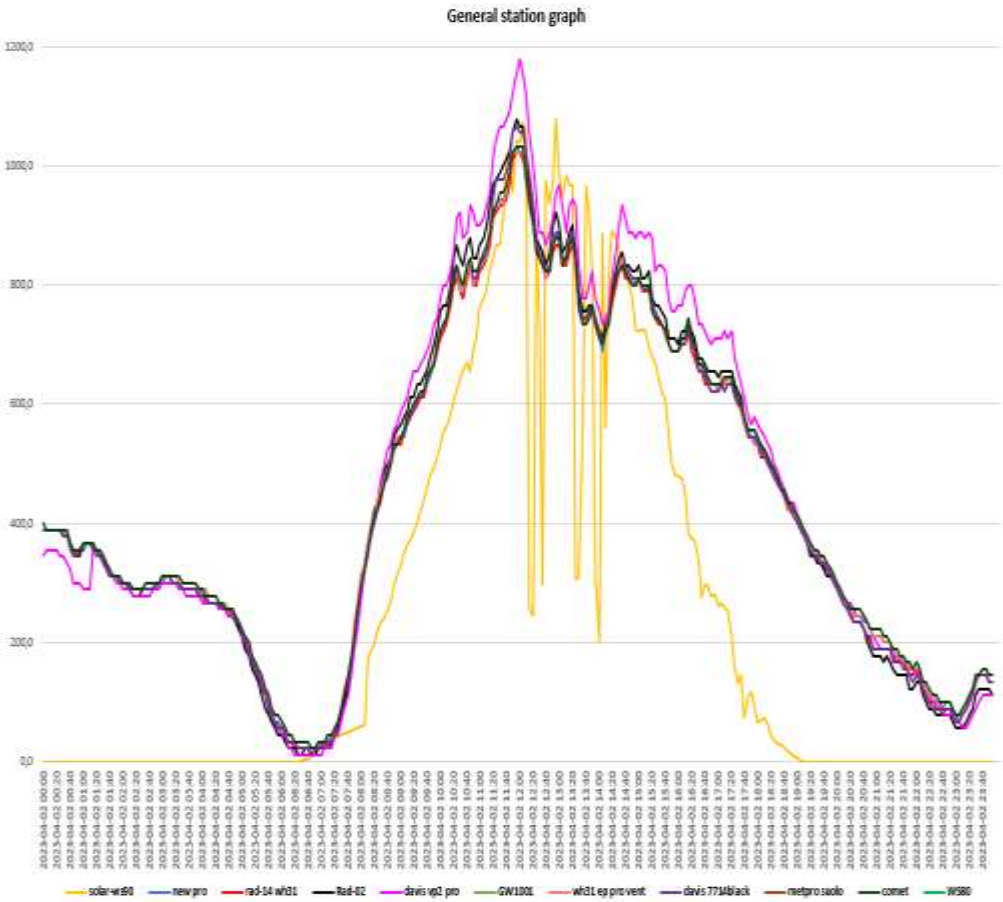


METPRO OLD (probe sensor wh32EP ecowitt) -RAD-02 (probe sensor wh31 EP ecowitt)





# general summary



**RAIN 24h**

<b>Pluviometro ,manuale TFA</b>	<b>0,0 mm</b>
<b>Pluviometro vp2 pro</b>	<b>0,0 mm</b>
<b>Pluviometro wh40 ecowitt</b>	<b>0,0 mm</b>
<b>Pluviometro ws90 ecowitt</b>	<b>0,0 mm</b>
<b>Pluviometro gw1001 ecowitt</b>	<b>0,0 mm</b>



